

THOMPSON LANDRY GALLERY

RENTAL INFORMATION 2023

STONE DISTILLERY GALLERY

32 DISTILLERY LANE
TORONTO, ON
M5A 3C4



THOMPSON LANDRY
GALLERY

COOPERAGE SPACE

6 TRINITY STREET
TORONTO, ON
M5A 3C4

The Events Department is available for consultation , please call or email to book a time
info@thompsonlandry.com • 416-364-4955 • Twitter: @eventsTLG • Facebook: Thompson Landry Gallery Events

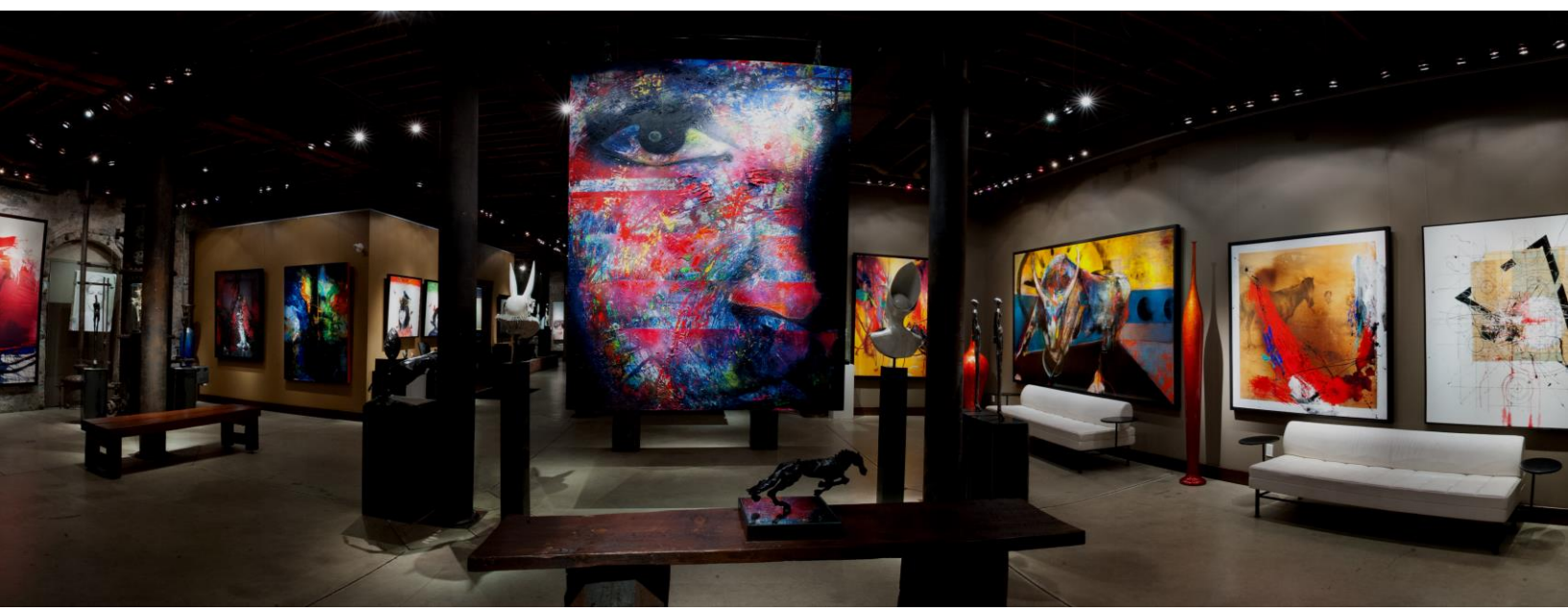
STONE DISTILLERY GALLERY

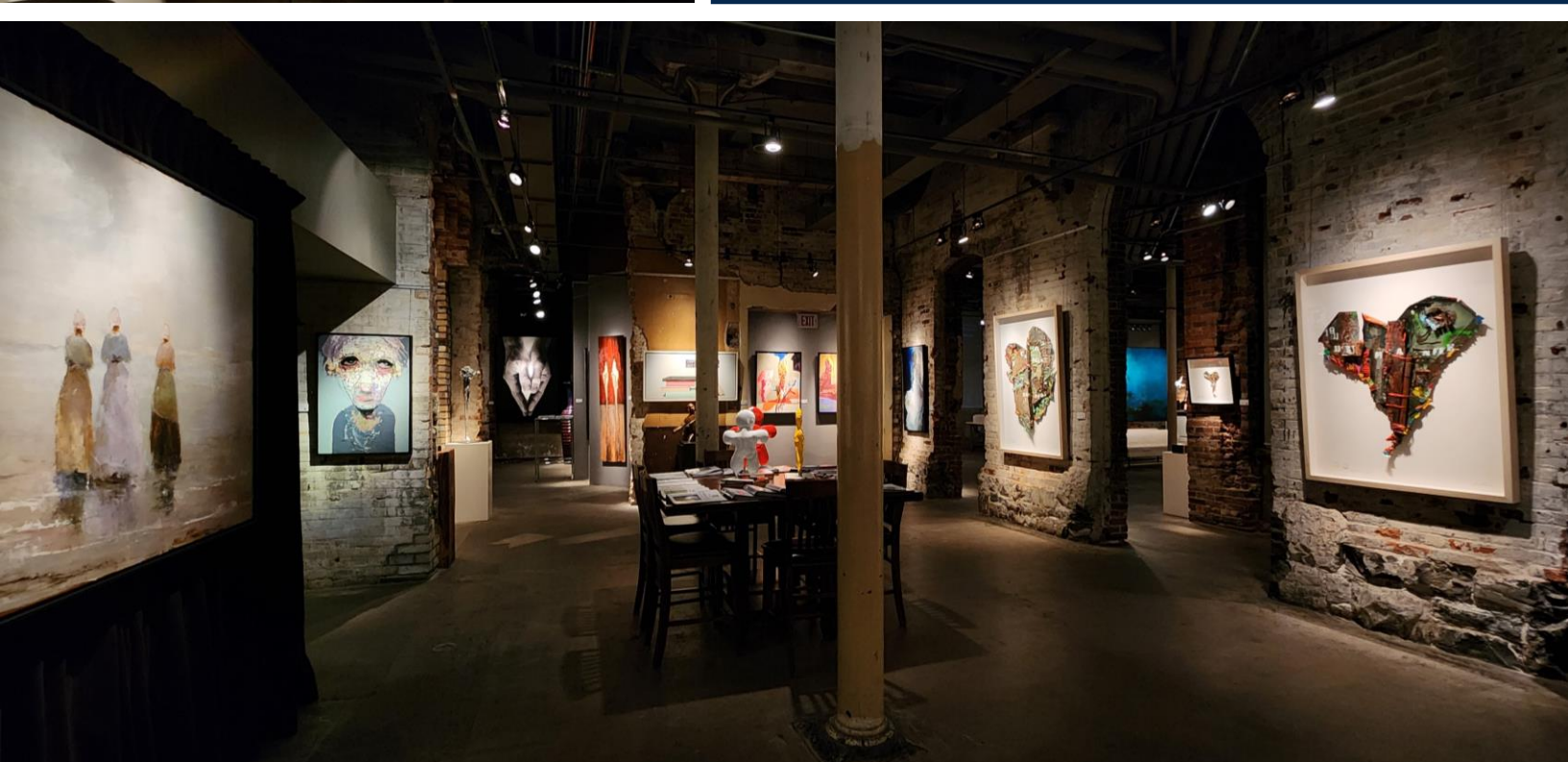
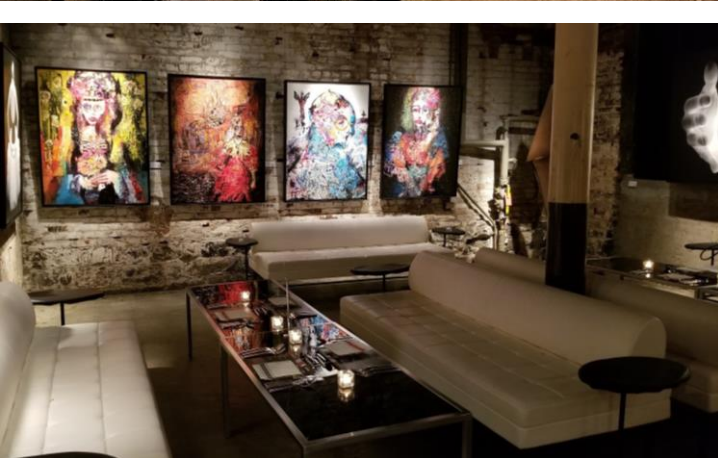
32 DISTILLERY LANE

The original Thompson Landry Gallery, the Stone Gallery, is located across the laneway from the Cooperage Space and is housed in a beautiful 2700 square foot space adorned with original distilling equipment and artwork. With its fourteen foot ceilings and unique architecture, the Stone Gallery is the perfect location for more intimate private celebrations and corporate gatherings.

Accenting the original distilling environment, our selection of contemporary and masters Québec artwork decorate the space in a vibrant and unique manner. Outfitted with a Bose-ambient sound system, the Gallery is ideal for any special occasion.

Venue rentals for our Stone Gallery, as well as our Cooperage Space, include the option to incorporate a private art tour with a member of our curatorial team to educate, entertain, and impress your guests.





COOPERAGE SPACE

6 TRINITY STREET

The larger of our two Galleries, the Cooperage Space, is housed in a beautiful 4300 square foot original historic building in the heart of Toronto's Distillery District. With its exposed brick and plaster walls, along with its unique layout, this sophisticated and rustic space is the perfect backdrop for any planned event. The original architecture is highlighted by the Gallery's ever changing display of contemporary Québécois paintings and sculptures.

Outfitted with a finishing kitchen and contemporary furniture, the Gallery is appropriate for various functions including, but not limited to, beautiful seated dinners, cocktail receptions, corporate gatherings and meetings, business launches and conferences, fundraisers, wedding ceremonies, and private celebrations.

Separated into three distinct yet beautifully connected spaces, the Gallery is ideal for larger events with the need for multiple functions. Alternatively, the spaces can be rented individually for a more intimate experience or small corporate workshops, while still maintaining the overall allure and appeal of the space.



RENTAL PACKAGES



STONE DISTILLERY GALLERY - EVENING RENTAL

\$2950.00

Rental Fee starting at 5pm until 1am (Including Set-Up)
Guest Arrival at 7pm

INCLUDES:

Administration
Corkage Fee
Gallery Supervision

OPTIONAL ITEMS:

Central Artwork Removal - \$350.00
Patio Use until 11pm - \$250.00
Early Closing Fee - \$500.00/hour

COOPERAGE SPACE - EVENING RENTAL

\$3950.00

Rental Fee starting at 5pm until 1am (Including Set-Up)
Guest Arrival at 7pm

INCLUDES:

Administration
Corkage Fee
Gallery Supervision

OPTIONAL ITEMS:

Central Artwork Removal - \$350.00
Patio Use until 11pm - \$250.00
Early Closing Fee - \$500.00/hour

*Please note that all above pricing does not include HST.





RENTAL PACKAGES



DAY RENTAL

Rental Fee starting at 10am until 6pm (Including Set-Up)
Guest Arrival at 12pm

STONE DISTILLERY GALLERY

Weekdays: \$3400
Weekends: \$4000

COOPERAGE SPACE

Weekdays: \$4000
Weekends: \$4500

INCLUDES:

Administration
Corkage Fee
Gallery Supervision

OPTIONAL ITEMS:

Central Artwork Removal (\$350.00) || Patio Use until 11pm (\$250.00) || Early Set Up Fee (\$500.00/hour)

DAY AND EVENING RENTAL

Rental Fee starting at 10am until 1am (Including Set-Up)
Guest Arrival at 12pm

STONE DISTILLERY GALLERY

Weekdays: \$5400
Weekends: \$5800

COOPERAGE SPACE

Weekdays: \$5800
Weekends: \$6200

INCLUDES:

Administration
Corkage Fee
Gallery Supervision

OPTIONAL ITEMS:

Central Artwork Removal (\$350.00) || Patio Use until 11pm (\$250.00) || Early Set Up Fee (\$500.00/hour)

*Please note that all above pricing does not include HST.



EXCLUSIVE CATERING PARTNERS

To facilitate your event booking, we have hand selected some of the best caterers in the city to feature as our Exclusive Catering Partners. Each brings their own flair to your time with us and ensures the flawless culinary execution, staffing, and set-up of your event. In collaboration with our Events Department, your chosen caterer will rent all necessary furniture, dishware, and linens and arrange a floor plan based on your individual event needs.

The Thompson Landry Gallery and the Distillery District's catering partners are welcome in on site with the inclusion of the 15% landmark fee added to your total staffing and food.

*Please note, should you wish to bring in an external caterer, the landmark fee is 20%.



ProvisionsTO
647-654-2820

info@provisionsto.com
www.provisionsto.com



OLIVER & BONACINI
CATERING

Oliver & Bonacini
416-364-1211

catering@oliverbonacini.com
www.oliverbonacinievents.com

m^cewan catering

McEwan Catering

416.444.6262 ext 243

Ann Stolte-Butler: Director of Catering

ann@mcewancatering.com
<https://mcewancatering.com>



Toben Food by Design

647-344-8323

email@tobenfoodbydesign.com
www.tobenfoodbydesign.com

CATERING PARTNERS CONTINUED



Couture Cuisine

416-449-5432

yummy@couturecuisine.com

www.couturecuisine.com



Eatertainment

416-964-1162

info@eatertainment.com

www.eatertainment.com/



Marigolds & Onions
CATERING & EVENT PRODUCTION

Marigolds and Onions Ltd.

416-256-4882 ext. 263

gmaxwell@marigoldsandonions.com

www.marigoldsandonions.com



DANIEL *et* DANIEL
CATERING & EVENTS

Daniel et Daniel

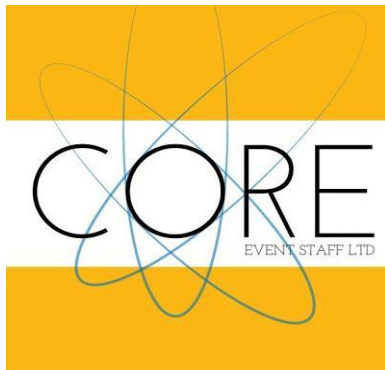
416-968-9275

reception@danieletdaniel.ca

www.danieletdaniel.ca

PREFERRED STAFFING COMPANIES

Your event deserves only the best when it comes to staffing. At the Thompson Landry Gallery, we work exclusively with two carefully selected companies to ensure our clients receive exceptional & consistent service. We require use of one of the following staffing companies: CORE Events Staffing Ltd., Formigas Staffing or DGS Event Staffing, unless none of these options is available on the event date.



CORE Event Staff Ltd.

416-469-2673

info@coreeventstaff.com

www.coreeventstaff.com



Formigas Staffing

416-536-9730

ana.pontes@formigas.ca

www.formigas.ca



DGS Event Staffing Agency

416-270-2292

reception@dgsevents.com

www.dgsevents.com



THOMPSON LANDRY GALLERY

ART EXPERT FOR YOUR EVENT

Opened in March of 2006, the Thompson Landry Gallery is one of the landmark tenants of the arts community at the Historic Distillery District. Pioneering new ground for galleries in Toronto, the Thompson Landry Gallery showcases both the very best of the new generation of Québécois contemporary artists, as well as the great masters of Québec.

Enhance your event at the Thompson Landry Gallery by having one of our knowledgeable Art Experts onsite to guide your guests through the space and engage them with the incredible pieces of art that fill our walls. This unique add-on is sure to make your next event an unforgettable one.

Our Art Experts may be booked for the first hour or two of your event as a means of introducing your guests to the space and the artwork that surrounds them. The basic fee for this service is \$90.00 +HST per hour.





VENUE CAPACITIES

Cooperage Space:

- 100 Formal Seated Reception
- 150 Standing Cocktail Reception
- 120 Conference Style

Stone Gallery:

- 50 Formal Seated Reception
- 75 Standing Cocktail Reception
- 100 Conference Style Seating

RENTAL POLICIES:

CONTRACTS

- Minimum length of rental in either space is 3 hours
- Holds will be finalized upon signing of the Venue Rental Schedule and Contract, and payment of the deposit (no non-refundable 50% of total amount owing)
- All contracts must be signed and finalized by both parties prior to event entry

INSURANCE AND SECURITY

- Security is required for events serving alcohol (1 guard per 100 guests or per entrance being used)
- All events require proof of insurance (mandatory two million dollars of coverage)

ARTWORK

- Removal of the central artwork must be confirmed prior to the event date
- Additional fees may be applicable for the removal or relocation of any additional artwork (to be determined prior to event date)
- Post-event inspection of all artworks must be completed by Gallery Representative, should discrepancies be found, the client will be liable

A/V AND SOUND SUPPLIERS

The 194 Group
 Shez Mahra (905)599-9091
info@the194group.com
www.the194group.com/tlg

DJS

DJ Floh Back Productions
danny@flohback.com

DJiZM Entertainment Group
 647-272-9184 || info@djizm.org

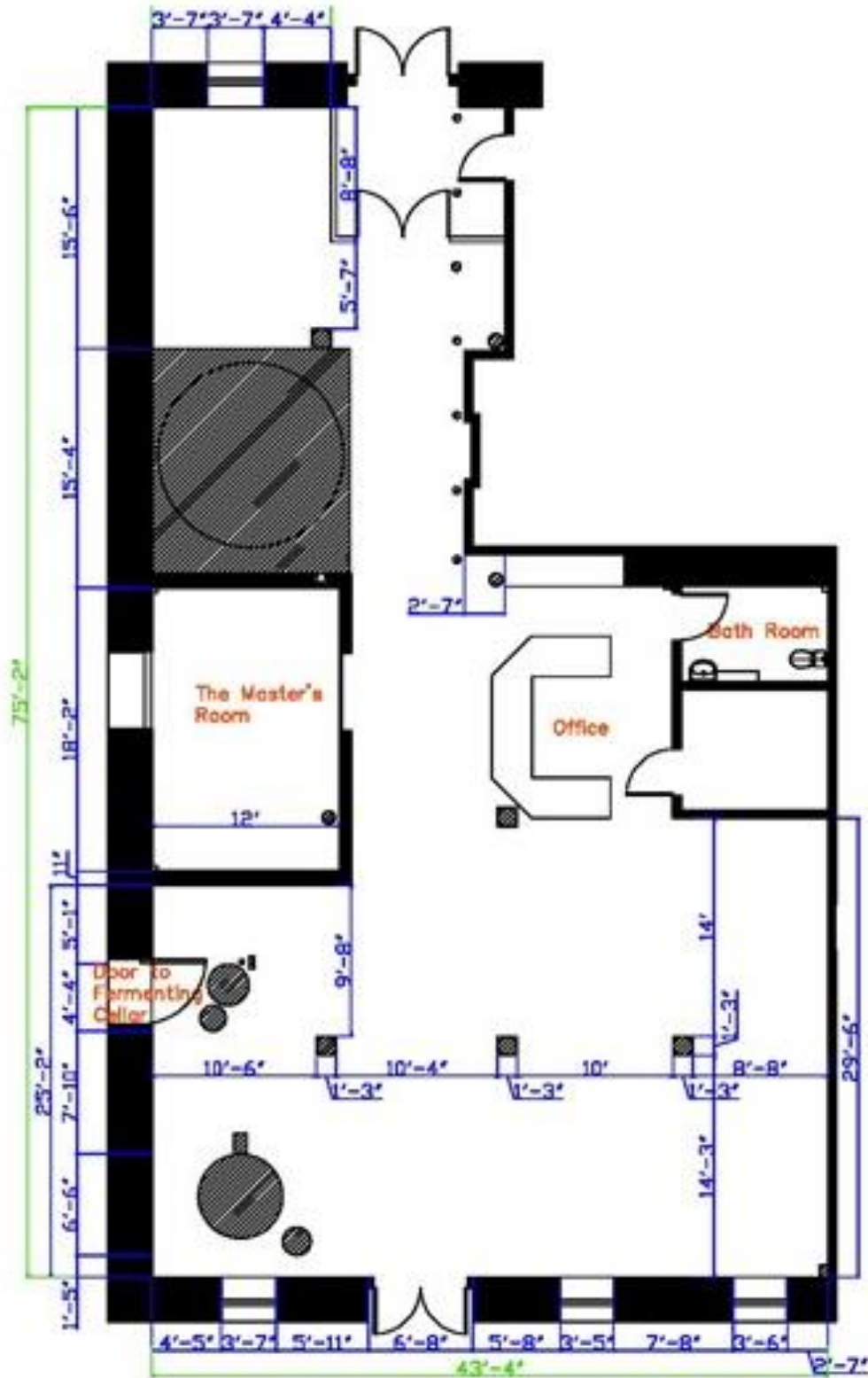
FOOD AND DRINK

- All deliveries must be made on the day of the event at the agreed upon times with no alcohol or personal belongings can be left on site before or after contracted hours
- On-site alcohol must be accompanied by a Special Occasion Permit supplied by either the client (if corkage has been paid) or the caterer
- A 15% landmark fee will be applied to your catering bill on food, staffing, and non-alcoholic beverages (please note for non-preferred caterers this fee will be 20%)
- External caterers are welcome on site upon preapproval of the gallery and signing of the Gallery's Space Use Guidelines and Kitchen Use Agreement



THOMPSON LANDRY
GALLERY

STONE DISTILERY GALLERY



Stone Gallery 2 3/4" : 1'0"



THOMPSON LANDRY
GALLERY

COOPERAGE SPACE

The Cooperage Space
2 1/4":1'0"

